



## Product Manual

# AeroVent<sup>®</sup> Crush 3X Aerosol Can Disposal System

10004525



Proudly Made in the USA  
newstripe.com • 303-364-7786

# AeroVent® Crush 3X Aerosol Can Disposal System

## TABLE OF CONTENTS

Precautionary Warnings .....	Page 1
AeroVent 3X Assembly .....	Page 2
BigSqueeze Assembly .....	Page 3
Operation.....	Pages 4 through 7
Troubleshooting Guide.....	Page 7
Maintenance .....	Page 8
Cobalt Puncture Point Replacement..	Page 9
Safe2Vent Filter Replacement .....	Page 9
AeroVent 3X Parts .....	Page 10
BigSqueeze Parts .....	Page 11
Warranty .....	Page 12

**Thank you for purchasing the AeroVent Crush 3X Aerosol Can Disposal System.**

The AeroVent Crush 3X system has been designed to puncture, drain, and crush aerosol cans that have been used and are mostly empty. It is not intended to continuously process full cans. If full cans are processed, they must be punctured one at a time in the AeroVent 3X, and in the center position only!

Please read over the instructions and make sure you understand the operating procedures before using the units.

Please check the serial number on your units. This Manual is for BigSqueeze units with serial number 1042271 and above only, and AeroVent 3X units with units serial number 1032100 and above only. For units with serial numbers below these numbers, please contact Newstripe for the correct manual.



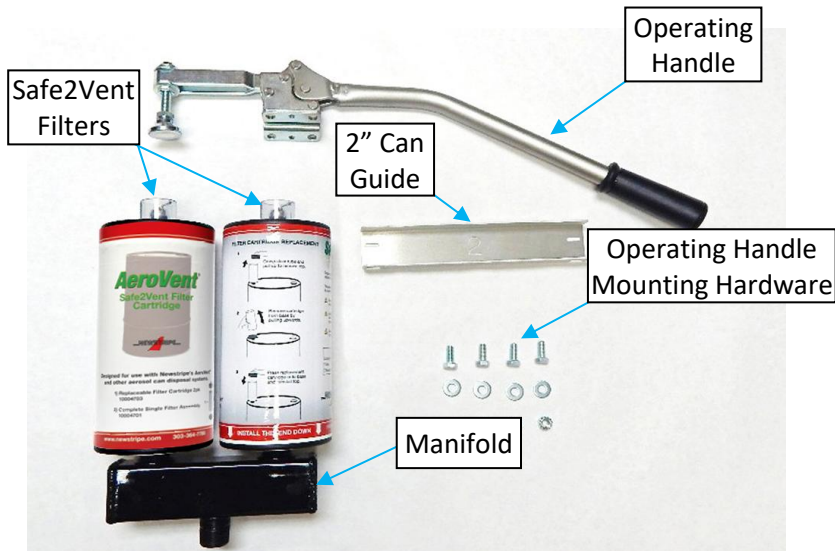
# AeroVent® Crush 3X Aerosol Can Disposal System



## PRECAUTIONARY WARNINGS

- **PLEASE** read and understand all operation instructions as detailed in this manual. Failure to follow specified instructions may result in equipment damage or injury to personnel.
- **ALWAYS** refer to the current Product SDS for specific chemical handling and safety instructions prior to processing aerosol cans.
- **AVOID** static discharge. Ensure that the unit grounding cable is attached to a suitable grounding source such as a metal water pipe or grounding rod prior to operation.
- **ALWAYS** keep the collection container closed when not in use and kept in a cool, well-ventilated area away from ignition sources.
- **ALWAYS** wear appropriate personal protective equipment and eye protection. Avoid direct contact with aerosol can contents.
- **CAUTION:** Use of filters not specifically designed for the AeroVent Aerosol Can Disposal System may result in dangerous back pressure inside the recovery drum, resulting in equipment damage or injury to personnel.
- **ALWAYS** refer to the Product SDS to check compatibility when multiple aerosols are co-mingled in the same collection drum.
- **ONLY** operate the unit outdoors or in a well-ventilated area.
- **ALWAYS** keep all waste collection containers away from heat, spark, and flame. Liquids collected into drums and accompanying vapors may be highly flammable. No Smoking near the unit or waste collection containers.
- **DO NOT** process cans with spray adhesives, expanding foam products, or insecticides.
- **ALWAYS** use a clean dry air source not to exceed 100 psi. An inline air filter ahead of the unit is recommended.
- **DO NOT** crush sealed containers. Containers must have an open end or be punctured prior to crushing. The unit is not recommended for crushing diesel or hydraulic oil filters, glass containers, or HDPE (High Density Polyethylene) containers. Do not operate the unit with an empty crushing chamber.
- **ALWAYS** place the container to be crushed with the open or punctured end down.
- **ALWAYS** disconnect the air source before performing maintenance on the crusher.
- **ALWAYS** consult your Facility Safety and/or Personnel Department for specified safety protocols prior to operating this equipment. Caustics, Pesticides, Insecticides and White Metals should never be collected into a drum with other liquids and should be segregated into properly labeled, designated containers. Contact your waste handler or Facility Safety Manager for more information.

# AeroVent® Crush 3X Aerosol Can Disposal System



## Your AeroVent 3X Box should include these parts:

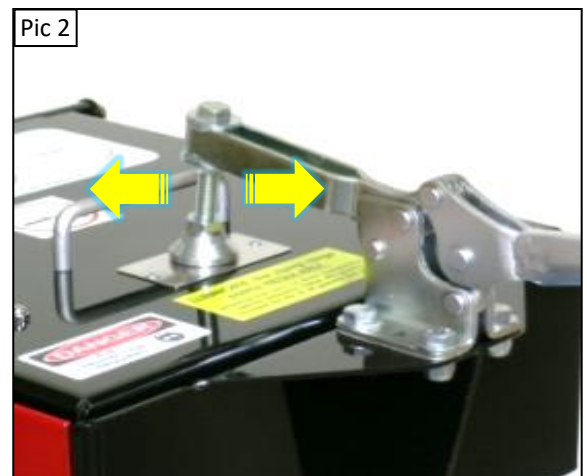
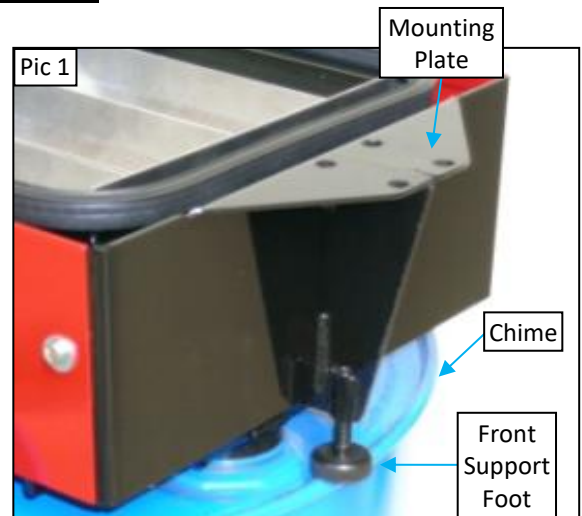
- AeroVent 3X with Ground Cable
- AeroVent Safe2Vent Filters (2) with Manifold
- 5/16-18 x 3/4" Bolts (4)
- 1/4" Flat Washers (4)
- 5/16-18 Lock Nuts (4)
- 2" Can Guide
- Operating Handle/Clamp Assembly

## AEROVENT 3X ASSEMBLY

1. Remove the 2" bung plug from an empty 30 or 55 gallon recovery drum. Insert the threaded nipple of the AeroVent 3X into the opening and turn the unit until it is hand tight. Center the unit over the drum.
2. Adjust the rear support feet clockwise until they are snug to the top of the drum. Then, adjust the front support foot until it is tight to the rim (chime) of the drum.
3. Place the operating handle on the mounting plate so that the holes are aligned. Insert one bolt (with washer) through each hole. Install one lock nut onto each bolt, but do not fully tighten (Pic 1).
4. Lower the operating handle so that the swivel foot is centered side-to-side on the lid striker plate. Tighten all nuts and bolts to secure the operating handle/clamp assembly to the mounting plate (Pic 2).
5. Remove the 3/4" bung plug from the top of the recovery drum. Thread the AeroVent Safe2Vent Dual Filter Assembly, with Manifold into the 3/4" bung of the drum. **Hand-Tighten Only!**

**Note: Remove the plastic wrapping before using the AeroVent Safe2Vent Filters.**

6. **Install the ground cable with a rear cover bolt of the AeroVent (See #12 in the AeroVent 3X parts drawing and the photos in the Maintenance section). Attach the clamp end of the ground cable to a suitable ground source, such as a metal water pipe or ground rod.**



# AeroVent® Crush 3X Aerosol Can Disposal System

## BIGSQUEEZE ASSEMBLY

1. Remove the bolts holding floor stand on the pallet and then lift it up and off of the BigSqueeze.
2. Remove the bolts holding the BigSqueeze on the pallet. Place the BigSqueeze on top of the floor stand as shown to the left and secure it with (4)  $\frac{5}{16}$ " x 1" bolts, (8)  $\frac{5}{16}$ " flat washers and (4)  $\frac{5}{16}$ " nylock nuts.

**Notes:** The BigSqueeze weighs approximately 200 pounds. Use a lift or hoist to set it on the floor stand. The can hanger on the floor stand goes to the front of the unit as shown in the photo to the right (Pic 3).

3. Install the supplied drain hose assembly in the outlet of the BigSqueeze on the bottom side of the unit.
4. Route the drain hose into a suitable container placed below the unit to catch any residual fluids that may be come out of the containers being crushed.
5. Connect an air source to the air supply hose located at the bottom right front corner of the unit. This hose is equipped with a standard male quick disconnect fitting for ease of connection.

**Note:** The operational range for the BigSqueeze is 90 psi minimum to 100 psi maximum. The non-adjustable regulator on the unit will limit the incoming air pressure to 100 psi. The unit is set to release at 85 psi.

Pic 3





# AeroVent® Crush 3X Aerosol Can Disposal System

## OPERATION

1. Lift the operating handle to release the clamp and open the AeroVent 3X lid.
2. Ensure that the front panel is in place in front of the trough liners.
3. Using the guide on the side of the unit, select the corresponding can guide for the size of the can being punctured. Slide the can guide onto the retainer clips located on the underside of the AeroVent 3X lid until it locks into place (Pic 4). Remove the can guide completely when draining 3" diameter cans.

Pic 4



**Note:** Use of the wrong can guide will result in aerosol cans not puncturing correctly and improper sealing of the lid, which will result in the leakage of can contents and vapors during draining.

4. Insert aerosol cans with **the bottom of the can pointing toward the clamp**, and up against the front panel in the trough (Pic 5).

Pic 5



**Note:** When processing less than three cans, insert single cans into the center trough liner or insert two cans into the outside two trough liners. **While processing multiple cans simultaneously, only puncture aerosol cans of the same diameter or cans may not puncture correctly, and improper sealing of the lid will occur.**

5. Close the lid. Push down on the operating handle to clamp the lid down and engage the puncturing mechanism.

6. The aerosol cans have now been punctured and are draining. Wait 15-30 seconds and confirm that the Viz-a-Ball indicator has stopped moving to ensure that the cans are completely drained. You may now lift the handle and open the lid to remove the cans (Pic 6).

Pic 6



**Note:** If aerosol cans are mostly full, leave the handle in the locked position for 45-60 seconds to allow the cans to drain completely. Keep the lid gasket lubricated with grease for a better seal and to keep it from sticking to the lid.

**Caution:** Full cans must be punctured one at a time and in the center position only!

7. Hang the punctured cans on the hangars on the front of the BigSqueeze crusher to stage them for crushing (Pic 7).

**Note:** This will give you a visual aid in knowing that the cans are punctured before you place them in the crushing chamber.

Pic 7



# AeroVent® Crush 3X Aerosol Can Disposal System

## OPERATION CONTINUED

8. Place the aerosol can alignment ring that corresponds with the diameter of the cans you wish to crush, into the center of the crusher. Place the punctured aerosol cans you wish to crush, punctured end down in the crushing chamber in multiples of one or three.

**Notes:** When crushing one can, place it directly in the center of the alignment ring. Do not crush two cans at a time, or cans of different sizes or lengths at a time. This will cause the unit to bind and may result in equipment damage or personal injury.



9. Close and latch the door and then push the button on the cycle valve. The air pressure reading on the gauge will climb until it reaches the factory setting of 85 psi. The cycle button will then pop back out, and air will vent as the ram plate retracts. Once the pressure begins to drop, the door may be opened, and the crushed cans may be removed.



**Note:** The unit may begin to automatically operate with air connected when the door is closed. If this happens, the operating cycle button was pushed prior to closing the door. Let the unit complete its cycle, and the unit will reset and be ready to begin the next cycle when the operating button is pushed.



### OPERATIONAL NOTES

- **NOTE:** If more crushing pressure is needed, you may loosen the safety lock screw located next to the adjuster on the pilot valve (to the left of the cycle button). Turn the adjuster clockwise to increase the pressure. Each quarter turn will increase the pressure by approximately 5 psi. You will not be able to adjust the pressure past the 100 psi threshold of the non-adjustable regulator. Operate the unit after each adjustment to check the pressure increase and the crushing results you are getting. If the cycle button does not pop back out, you have adjusted the pilot valve past the 100 psi threshold, and it will need to be backed off some. Once the desired pressure is reached, tighten the safety lock screw.
- **NOTE:** If the Safety Relief Valve opens during the cycle, the non-adjustable regulator has malfunctioned. If this happens, **STOP** using the unit and contact Newstripe for a corrective action.

# AeroVent® Crush 3X Aerosol Can Disposal System

## STANDARD OPERATION FOR CRUSHING OTHER CONTAINERS

1. Remove the aerosol can insert ring.
2. Place a pail, can, filter, or other container, OPEN END DOWN and centered over the drain hole, in the crushing chamber. Close and latch the door.

**Note:** The unit may begin to automatically operate with air connected when the door is closed. If this happens, the operating cycle button was pushed prior to closing the door. Let the unit complete its cycle, and the unit will reset and be ready to begin the next cycle when the operating button is pushed.

3. Push the red cycle button. The air pressure reading on the gauge will climb until it reaches the factory setting of 85 psi. The cycle button will then pop back out, and air will vent as the ram plate retracts. Once the pressure begins to drop, the door may be opened, and the crushed container or filter may be removed.

4. Once the ram plate has fully retracted, another container or filter may be inserted and the cycle repeated.



## OPERATION WITH STANDARD ALIGNMENT RING

**Note:** The alignment ring is used to center smaller containers, or to center the pedestal in the recess inside the BigSqueeze. The most common container used with the alignment ring is a 1 gallon paint pail. The alignment ring helps prevent the container from slipping sideways during crushing and binding the ram plate.

1. Open the door and place the alignment ring in the bottom recess of the BigSqueeze. The smaller containers should fit within the center of the alignment ring.
2. Refer back to the **STANDARD OPERATION** section to proceed.





# AeroVent® Crush 3X Aerosol Can Disposal System

## OPERATION WITH PEDESTAL & SPLASH GUARD

**Note:** The Pedestal is used for shorter automotive filters or containers, in conjunction with the alignment ring. It may be used with the splash guard to contain any splash from used oil filters during the crushing process. The Pedestal raises the filter or small container to make it easier to crush and to shorten the crushing cycle.

1. Open the door and place the alignment ring in the bottom recess of the BigSqueeze.
2. Place the pedestal drain plate in the center recess of the alignment ring.



3. Set the pedestal over the pedestal drain plate in the center recess of the alignment ring.



4. If desired, place the splash guard over the pedestal to help contain splash during the crushing process.



5. Refer back to the **STANDARD OPERATION** section to proceed.

## TROUBLESHOOTING GUIDE

PROBLEM	REMEDY
The unit begins to operate as soon as you connect the air, with the door closed.	The operating cycle button was pushed prior to closing the door. Let the unit finish the cycle and it will reset.
Air pressure climbs slowly or not at all after the operating cycle button is pushed.	Insufficient air supply. The minimum requirement is 90 psi. Check that door safety switch is depressed when the door is closed. If it is not depressed, bend the door tab in until it depresses the switch.
Container or filter not crushed enough.	Increase the operating pressure as outlined in the <b>OPERATIONAL NOTES</b> on page 5. You will not be able to exceed 100 psi due to the non-adjustable regulator.
Guide Tie Rods appear loose.	This is normal, so there is no remedy. The guide tie rods must be slightly loose to allow the ram plate to float during the crushing cycle.

# AeroVent® Crush 3X Aerosol Can Disposal System

## MAINTENANCE

ITEM	CHECK	MAINTENANCE ACTION
Crusher Guide Tie Rods (4)	After every 20 hours of operation or once a week	Lubricate with EP (Extreme Pressure) bearing grease.
Crusher Door Hinge and Latch	Monthly	Lubricate with light spray oil.
AeroVent Lid Gasket	Before each use	Lubricate the surface with grease regularly to keep the lid from sticking. Replace as needed.
AeroVent Cobalt Puncture Points (3)	Before each use	Replace as needed.
AeroVent Trough Grommets (3)	Before each use	Replace as needed.
AeroVent Operating Clamp Assembly	Inspect before each use Lubricate weekly	Replace if pivot points are excessively worn. Lubricate with light oil.
AeroVent Safe2Vent Filters (2)	Monthly	Replace every 60 days or 600 cans. Replace more often when processing full cans.
Containment Drum	Monthly or more often when processing full cans.	Replace with an empty drum when the drum becomes 70% (2/3) full.
AeroVent Bellows (3)	Every 6 months	Replace if worn or torn, as needed.



### **PRECAUTIONARY WARNING**

- We do not recommend allowing the drum to become more than 70% (2/3) full. Air space is needed in the drum to allow for proper draining and venting of fumes and to limit splash back into the AeroVent or into the AeroVent Safe2Vent filters. Collected wastes should be recycled or disposed of in accordance with your local regulations.

# AeroVent® Crush 3X Aerosol Can Disposal System

## AEROVENT 3X COBALT PUNCTURE POINT REPLACEMENT

(See the parts drawing on page 5)

**Note:** Leave the AeroVent mounted on the drum to replace the cobalt points.

1. Open the lid and remove the left and right shrouds including the ground cable assembly.
2. Remove the four bolts that secure the bellows flange to the base from underneath the unit. There is no need to loosen any of the bellows clamps unless the bellows are damaged and need to be replaced.
3. Rotate the trough assembly with the bellows flange and bellows, upward and allow it to rest against the lid.

**Note:** The bellows flange may have to be **gently** pried off of the flange gasket to rotate the assembly up.

4. Loosen the three setscrew bolts with a 5/16" wrench and then replace the three points. Tighten the setscrew bolts against the new points.
5. Re-assemble the unit in the reverse order of the steps above.

**Note:** Do not forget to reinstall the ground cable assembly.

## AEROVENT SAFE2VENT FILTER REPLACEMENT

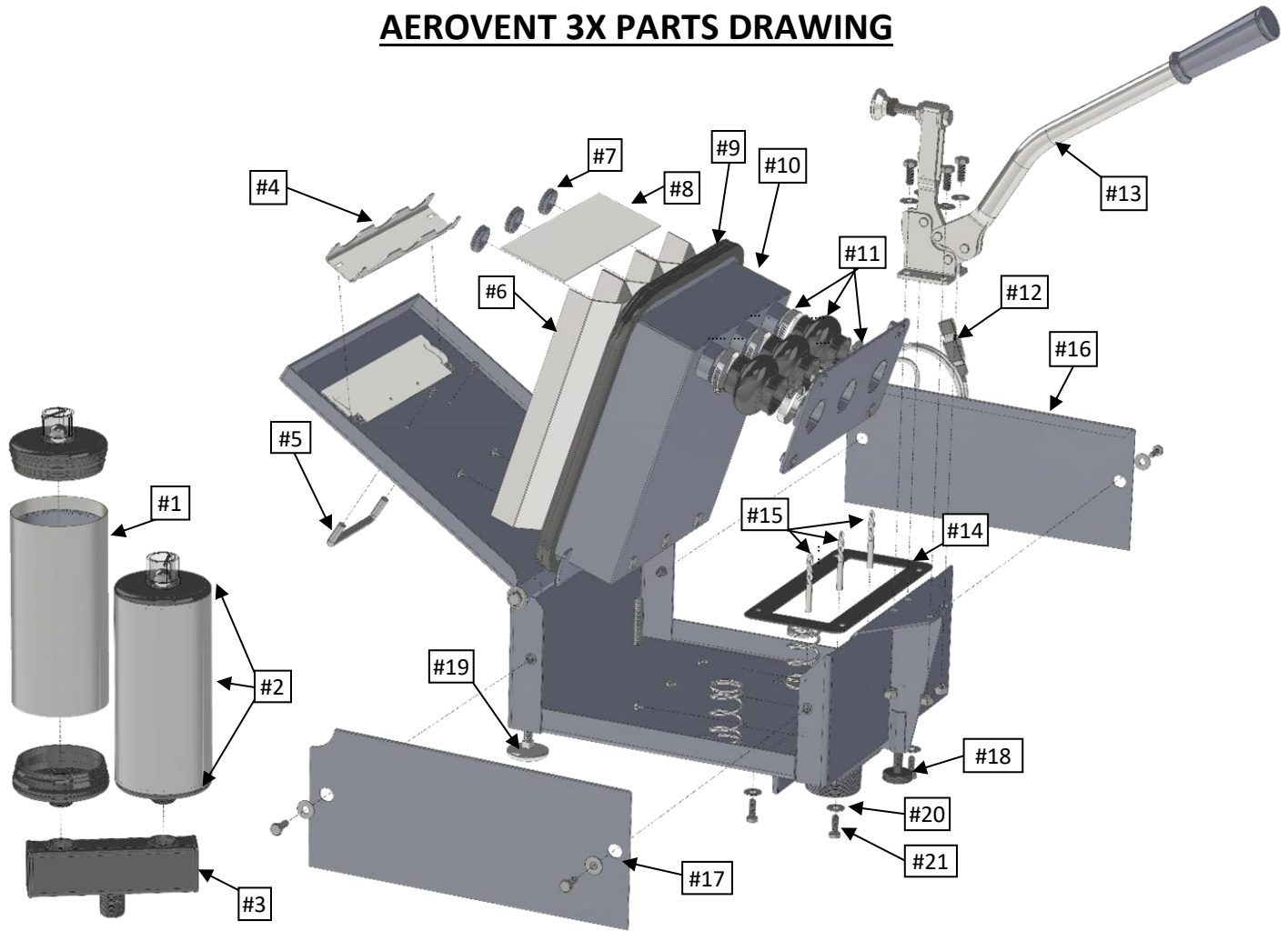
1. Remove the filter cap with Viz-a-Ball™ from one of the filters in the Dual Filter Assembly.
2. Lift off the filter from the filter base.
3. Press the new filter onto the filter base.

4. Replace the filter cap with Viz-a-Ball™ by pressing it into the top of the element.
5. Repeat the steps for the second filter in the Dual Filter Assembly.
6. Dispose of the used filters appropriately.



# AeroVent® Crush 3X Aerosol Can Disposal System

## AEROVENT 3X PARTS DRAWING



## AEROVENT 3X PARTS LIST

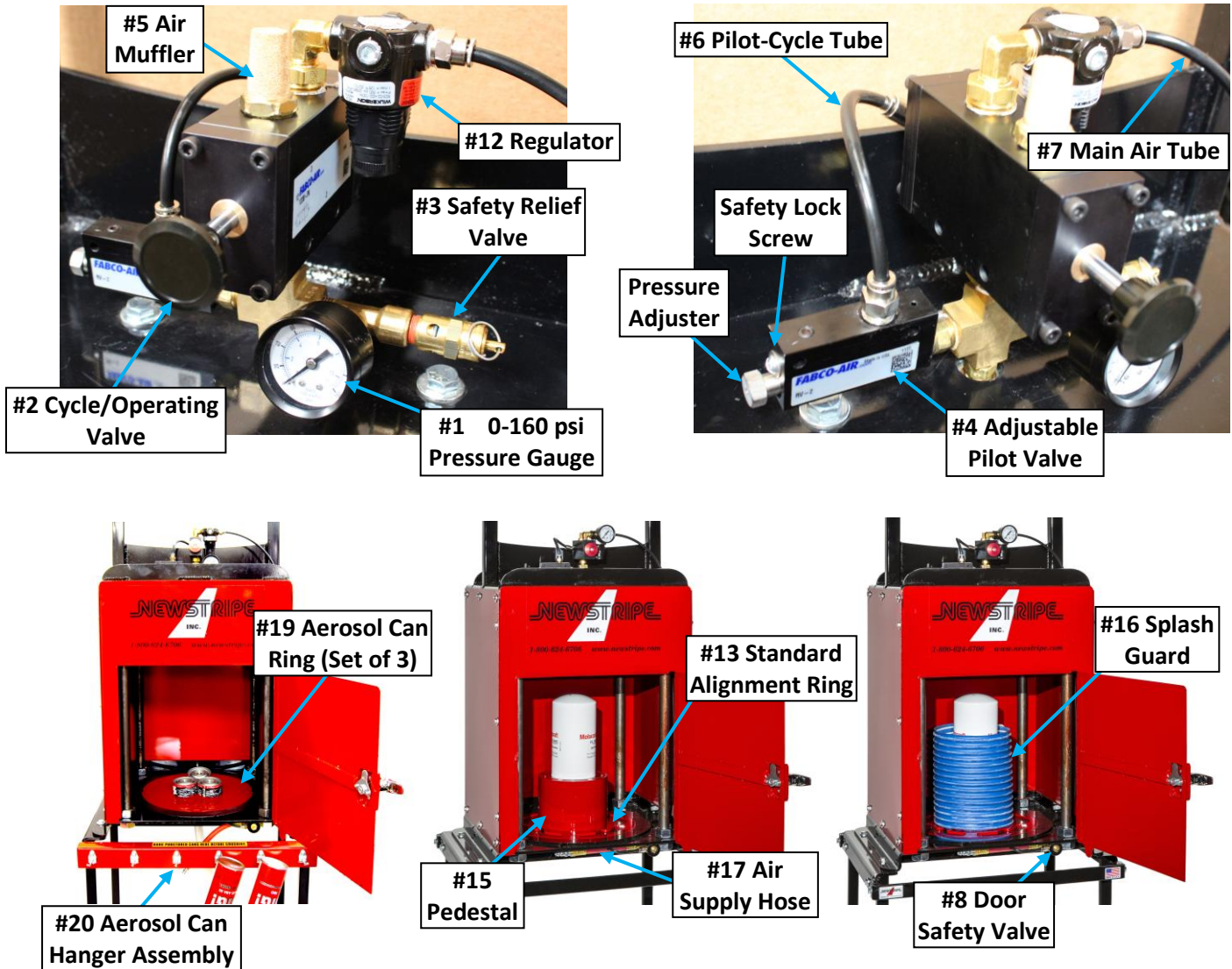
Item	Description	Part Number
#1	AeroVent Safe2Vent Filter (2 Pk)	10004703
#2	AeroVent Safe2Vent Filter Assembly	10004701
#3	Manifold	10004709
#4	Can Guide 2"	10004331
	Can Guide 2.6"	10004332
#5	Lid Handle	10004195
#6	Trough Liner (3 Required)	10004297
#7	Trough Liner Grommet (4 Pk)	10002202
#8	Front Panel	10004298
#9	Lid Gasket	10004343
#10	Trough	10004339
#11	Bellows With Clamps (3 Pk)	10000987

Item	Description	Part Number
#12	Ground Cable Assembly	10003914
#13	Operating Handle/Clamp Assembly	10003909
#14	Flange Gasket	10004344
#15	¼" AeroVent Cobalt Points With Screws (3 Pk)	10004025
#16	Right Shroud	10004287
#17	Left Shroud	10004286
#18	Front Support Foot	10004306
#19	Rear Support Foot (2 Required)	10004305
#20	Flange Bolts (4 Required)	10000060
#21	Flange Washers (4 Required)	10000063



# AeroVent® Crush 3X Aerosol Can Disposal System

## BIGSQUEEZE PARTS PHOTOS



## BIGSQUEEZE PARTS LIST

Item	Description	Part Number
#1	0-160 psi Gauge	10004965
#2	High-Flow Cycle/Operating Valve	10002868
#3	Safety Relief Valve	10001525
#4	Adjustable Pilot Valve	10001660
#5	Air Muffler	10002869
#6	Pilot-Cycle Tube	10001689
#7	Main Air Tube	10001690
#8	Door Safety Valve	10000609
#9	Air Spring, 3 Bellow (Not shown)	10001663
#10	Return Spring (2) (Not shown)	10001658

Item	Description	Part Number
#11	Door Latch/Handle	10001694
#12	Regulator, 100 psi Non-Adjustable	10001103
#13	Standard Alignment Ring	10004944
#14	Pedestal Drain Plate (Under Pedestal)	10004953
#15	Pedestal	10004945
#16	Splash Guard	10004948
#17	Air Supply Hose Assembly	10003480
#18	Drain Hose Assembly (Not shown)	10004697
#19	Aerosol Can Alignment Ring (Set of 3)	10002503
#20	Aerosol Can Hanger Assembly	10002506

# AeroVent® Crush 3X Aerosol Can Disposal System

10004525

## 18 Month Warranty

Newstripe, Inc. ("Newstripe") warrants to the original purchaser, for 18 (Eighteen) Months after date of purchase, that the equipment\* hereby sold shall be free of defects in materials and workmanship. This warranty does not extend to any damage or malfunction resulting in misuse, neglect, accident, improper operation, or normal wear and tear.

\* Gasoline engines, compressors, low pressure pumps, and transaxles are furnished with their respective manufacturers' warranties only and are not covered by any warranty of Newstripe. High pressure pumps manufactured by Newstripe (excluding wear items like diaphragms and valves) are warranted for materials and workmanship for 12 Months after the date of purchase.

Damage incurred in shipment from Newstripe to the purchaser is the total responsibility of the shipping carrier. The purchaser is responsible for noting any damages on the Bill of Lading of the shipping carrier and Newstripe will work with the shipping carrier to resolve any damages incurred.

The Newstripe obligation under this warranty and any implied warranties is limited to replacement or repair of defective parts of its manufacture without charge for 18 (Eighteen) Months from date of purchase. For service under this warranty, the purchaser shall obtain an approved Return Materials Authorization (RMA) from Newstripe and then ship the defective part or parts of the equipment, transportation prepaid by the purchaser, to Newstripe together with a written description of any claimed defect and proof of purchase date of the materials being returned. To review Newstripe's complete guidelines for warranty claims and returns, please visit our website at [www.newstripe.com](http://www.newstripe.com).

The responsibilities described above are the only responsibilities of Newstripe under this written warranty or any implied warranty and may be exercised only within 18 (Eighteen) Months from the date of original purchase. In no event shall Newstripe be liable for incidental or consequential damages and no person had any authority to bind it to any representation or warranty. Newstripe is not responsible for work done, materials furnished, or repairs made by others without its specific written authorization.

This warranty shall be in lieu of any and all other warranties, expressed or implied, including any warranties of merchantability or fitness for a particular purpose, and there is no other representation or warranty of any kind with respect to the goods sold hereby except as set forth herein. It is expressly agreed that this warranty shall be limited to the adjustment, repair or replacement of parts and the labor and services required thereby. In no event, including any claim of negligence, shall Newstripe be liable for incidental or consequential damages.



